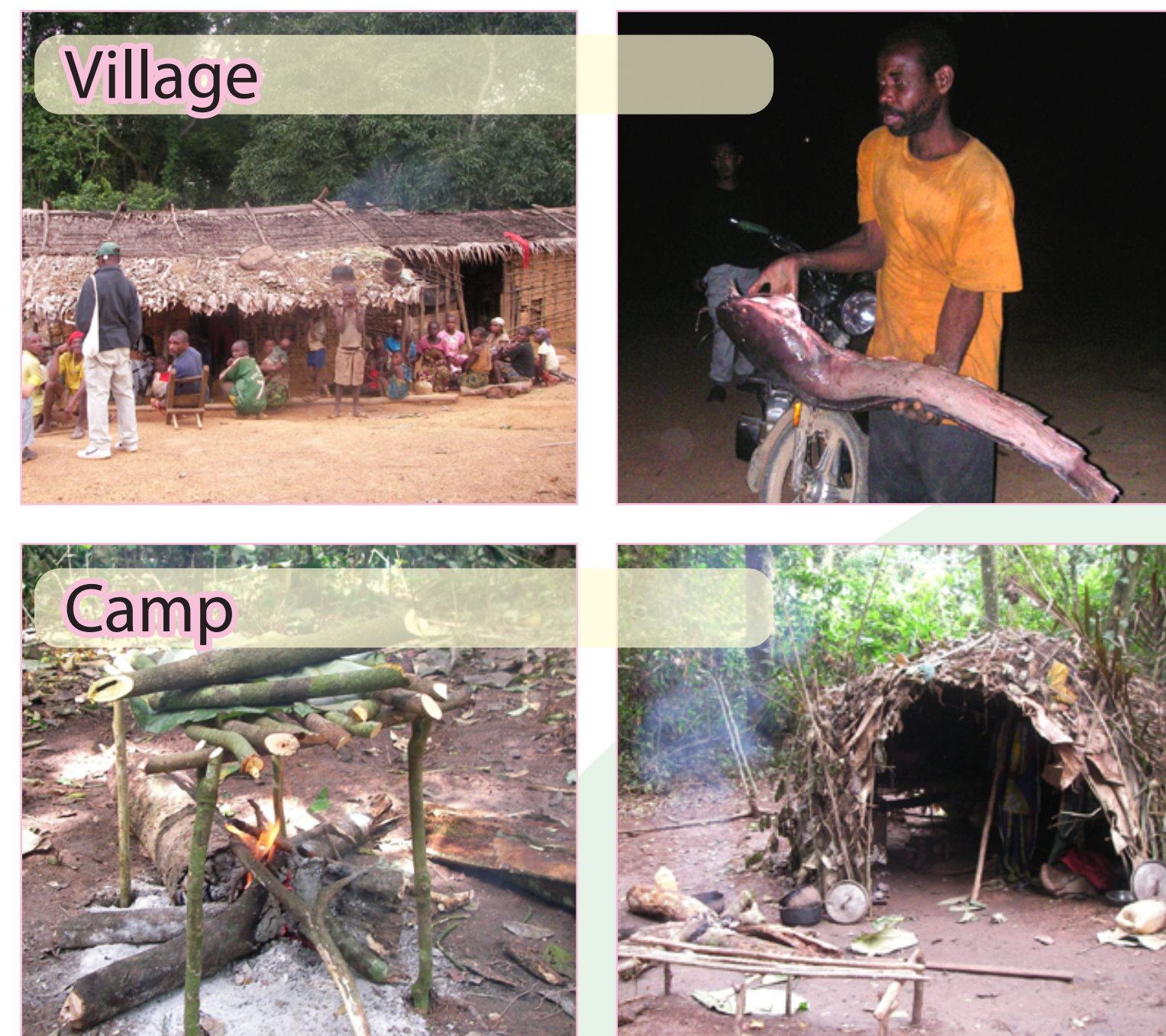




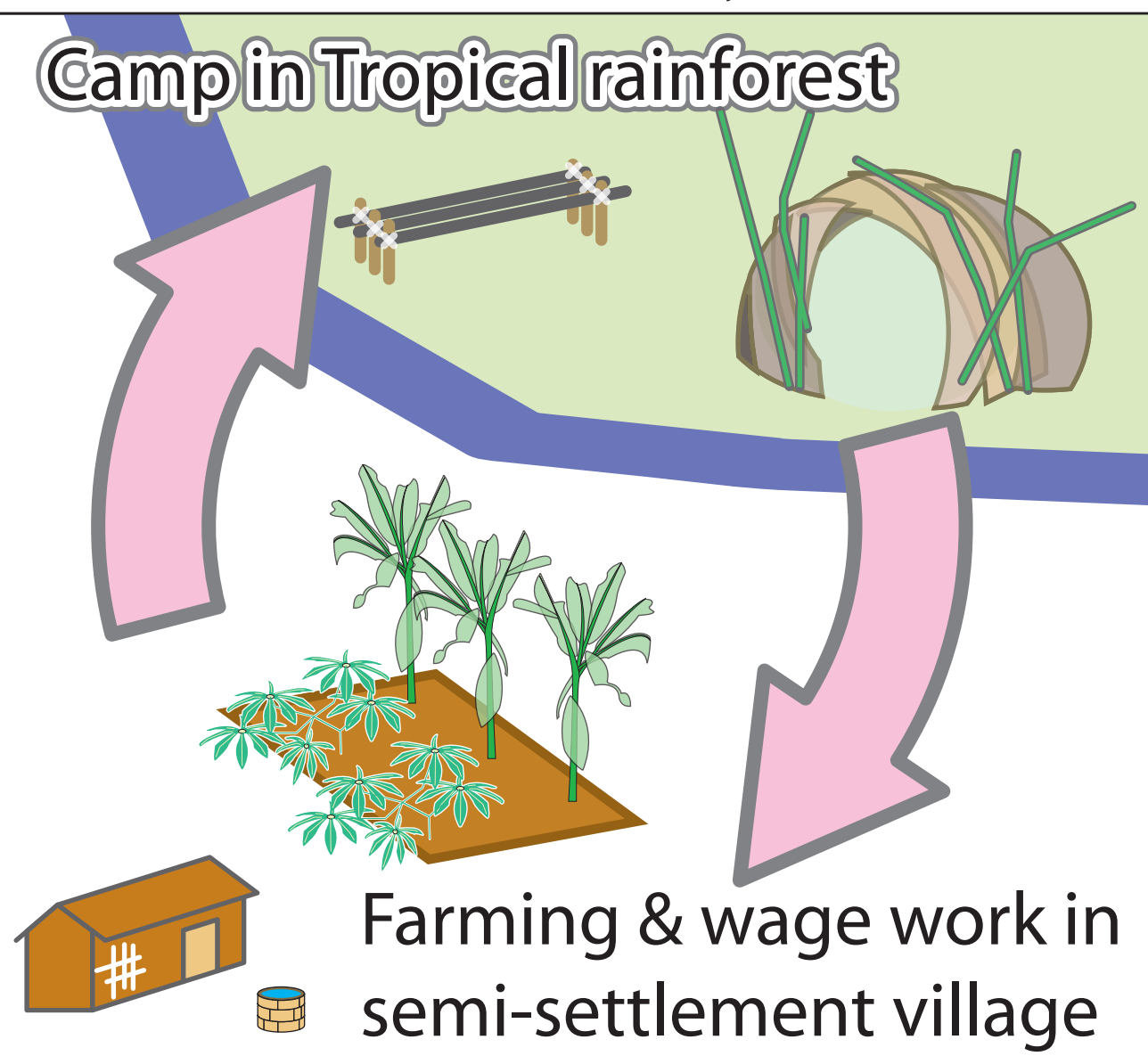
The growth and nutritional status of "Pygmies' hunter-gatherers" children in South-East Cameroon.

Izumi HAGINO

Laboratory of Human Ecology, Graduate School of Health Sciences, Hokkaido University



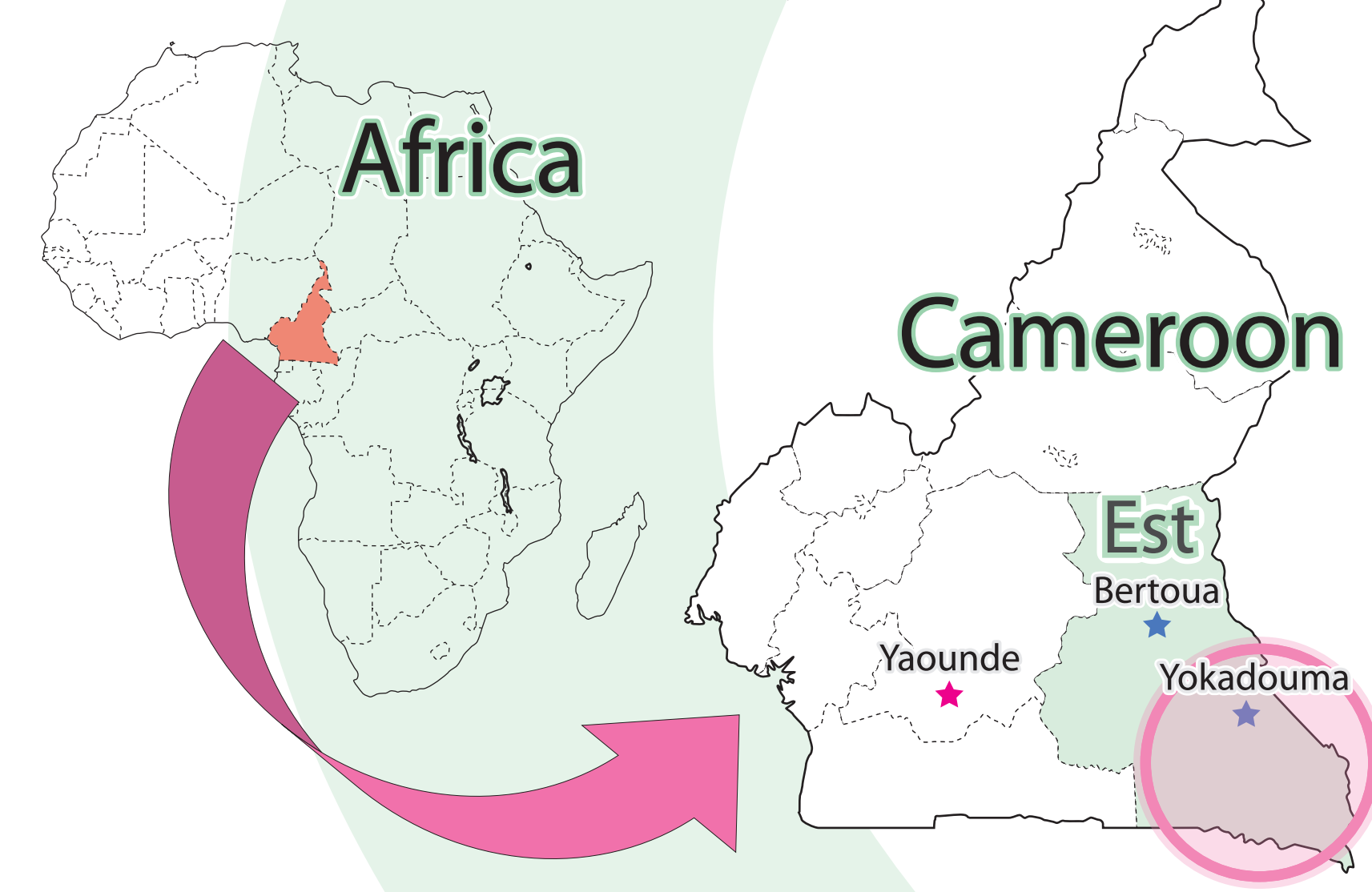
3. HOW do they live?



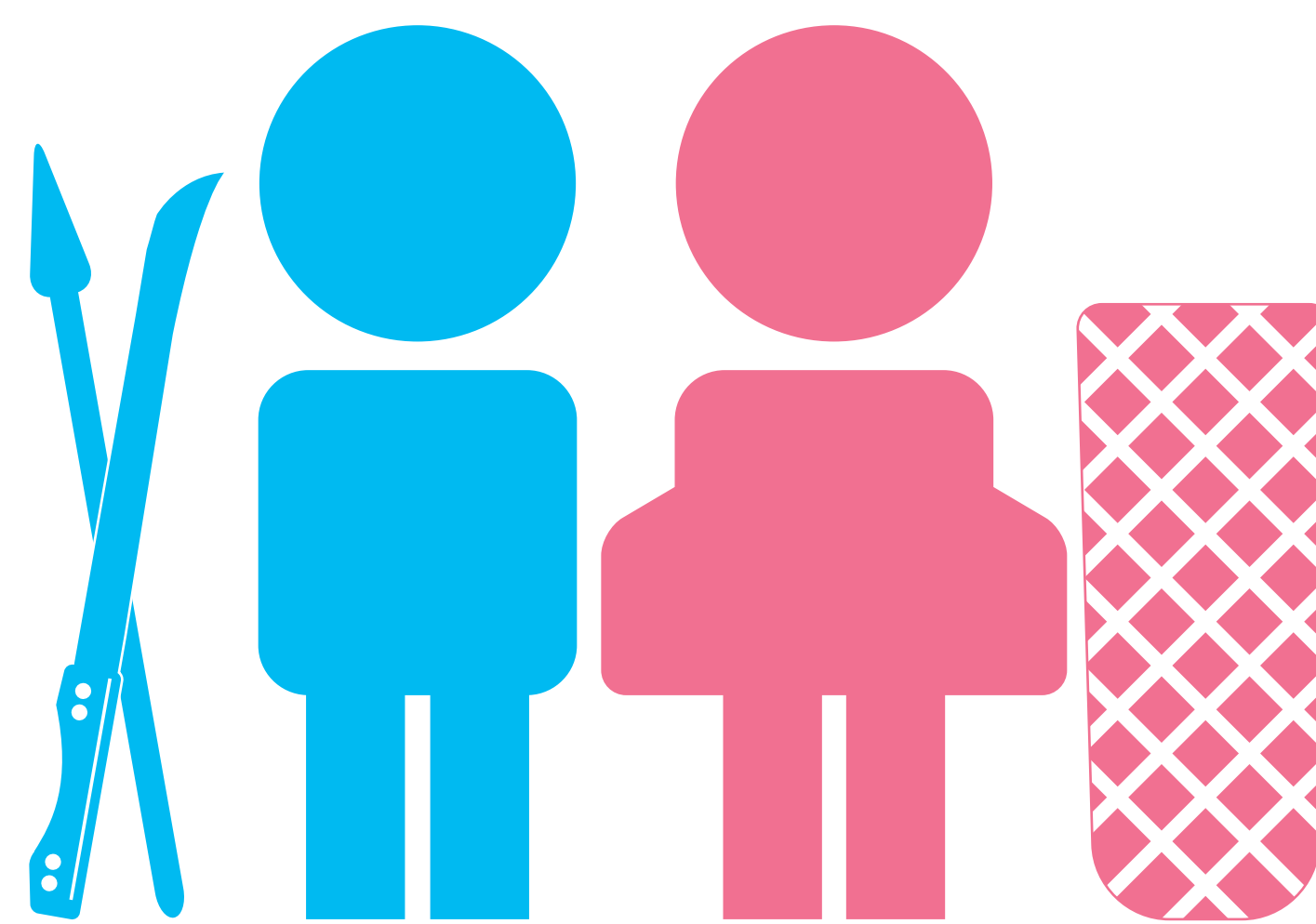
4. WHAT kind of studies about them?



2. WHERE do they live?



Background

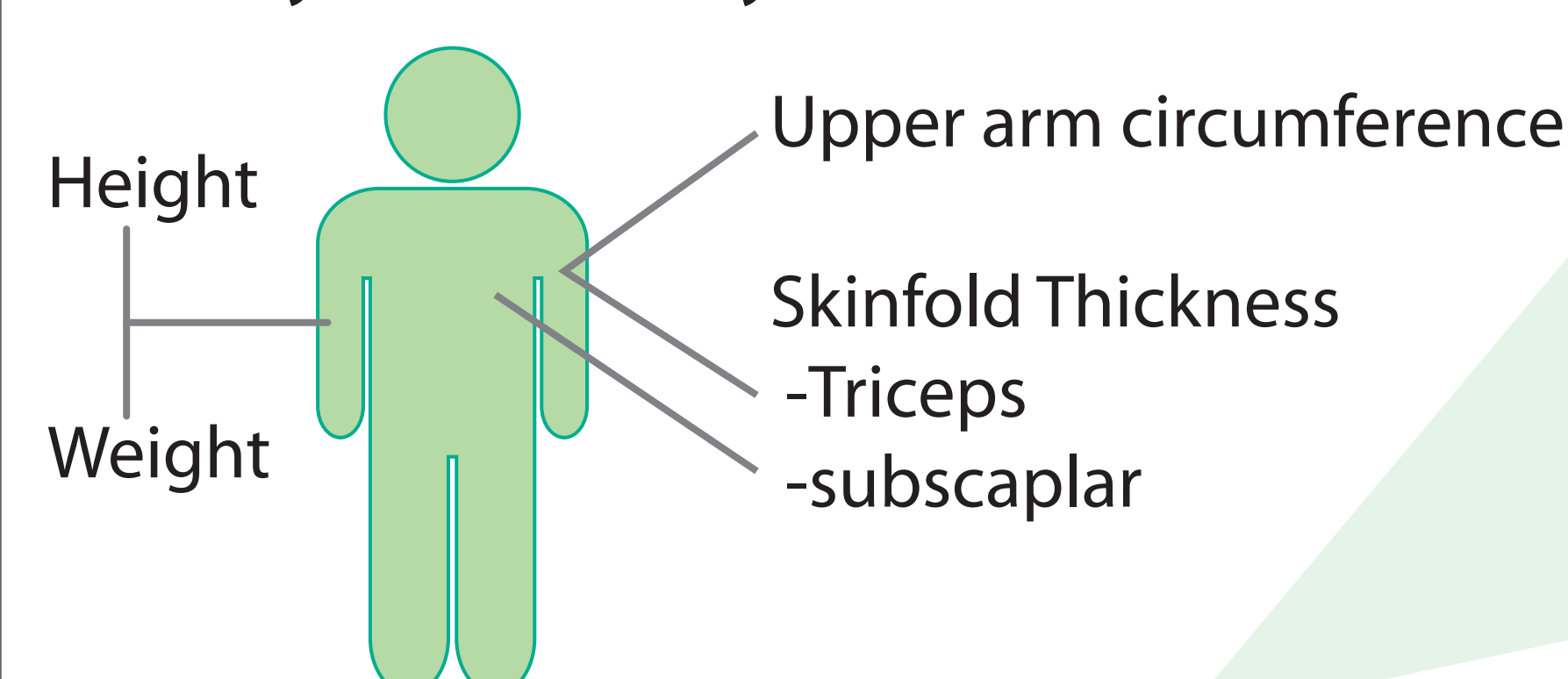


1. WHO are African pygmies?

- >Original inhabitants of the tropical rainforests
- >Smallest physiques in the world population
- >Two living location
 - at semi-settlement village
 - at camp in forest
- >Groups of Pygmy Hunter-Gatherers
 - Aka (Congo, R.C.A)
 - Twa, Efe, Mbuti (D.R.Congo)
 - Baka (Cameroon, R.Congo)**

6. HOW we study?

Body measurement for Baka children (2-18 years old; Boys=54, Girls=50)



5. WHY we study?

Many researchers spot at traditional & unique life of Baka, what is lost in advanced nations. There maybe a hint for "sustainable society" !!

- Way of thinking, daily action
- Social model



But... is that a possible life model?

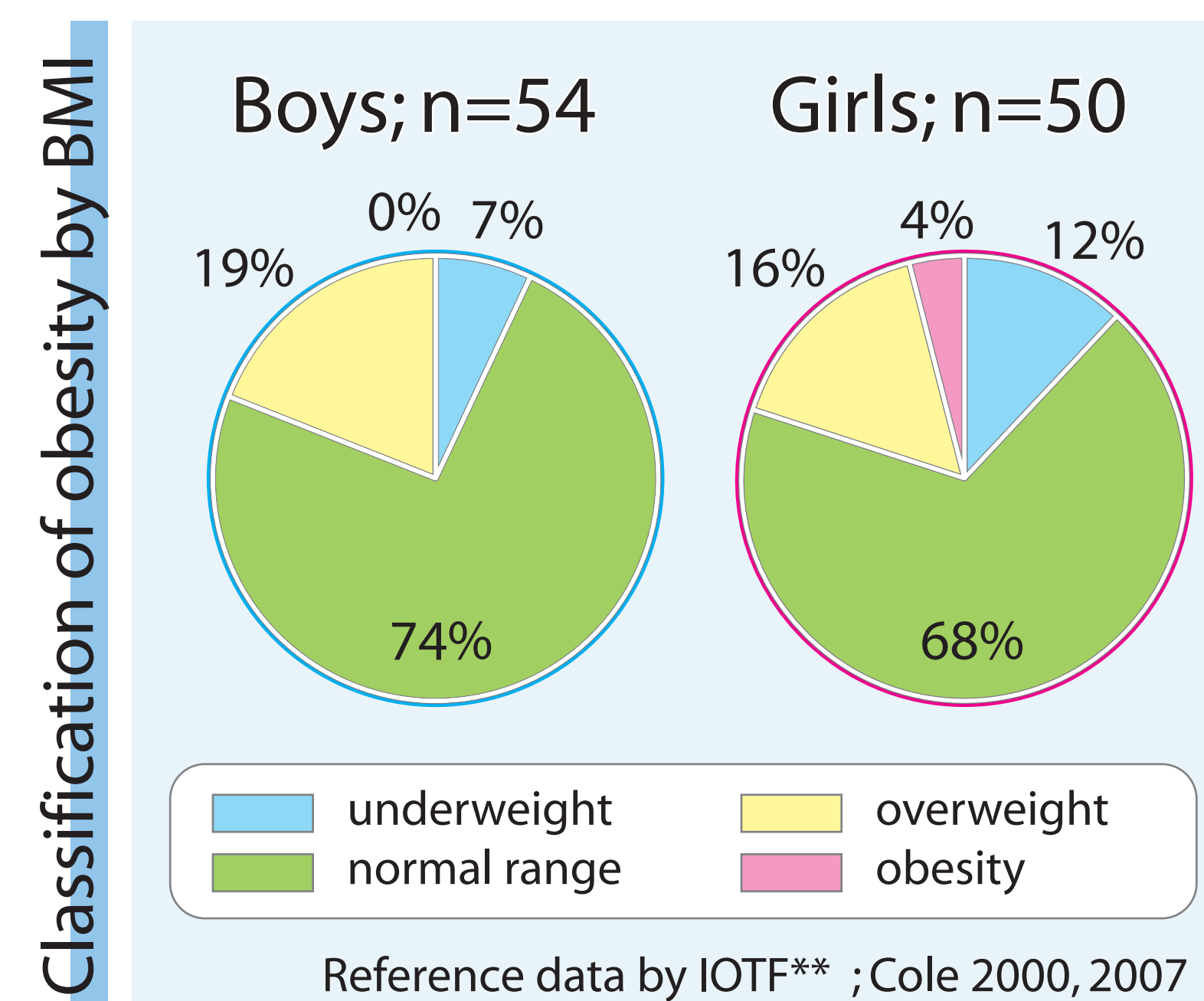
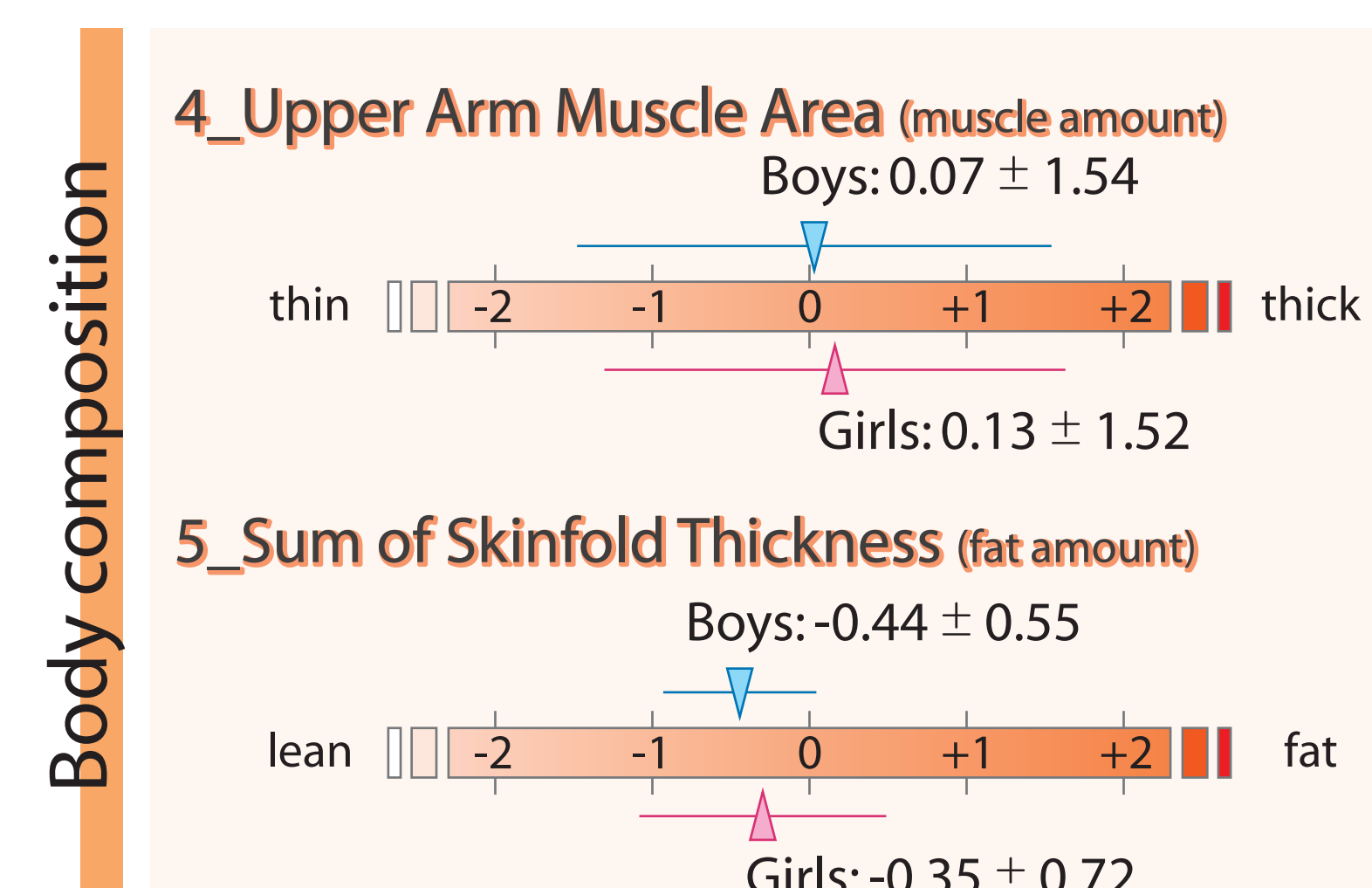
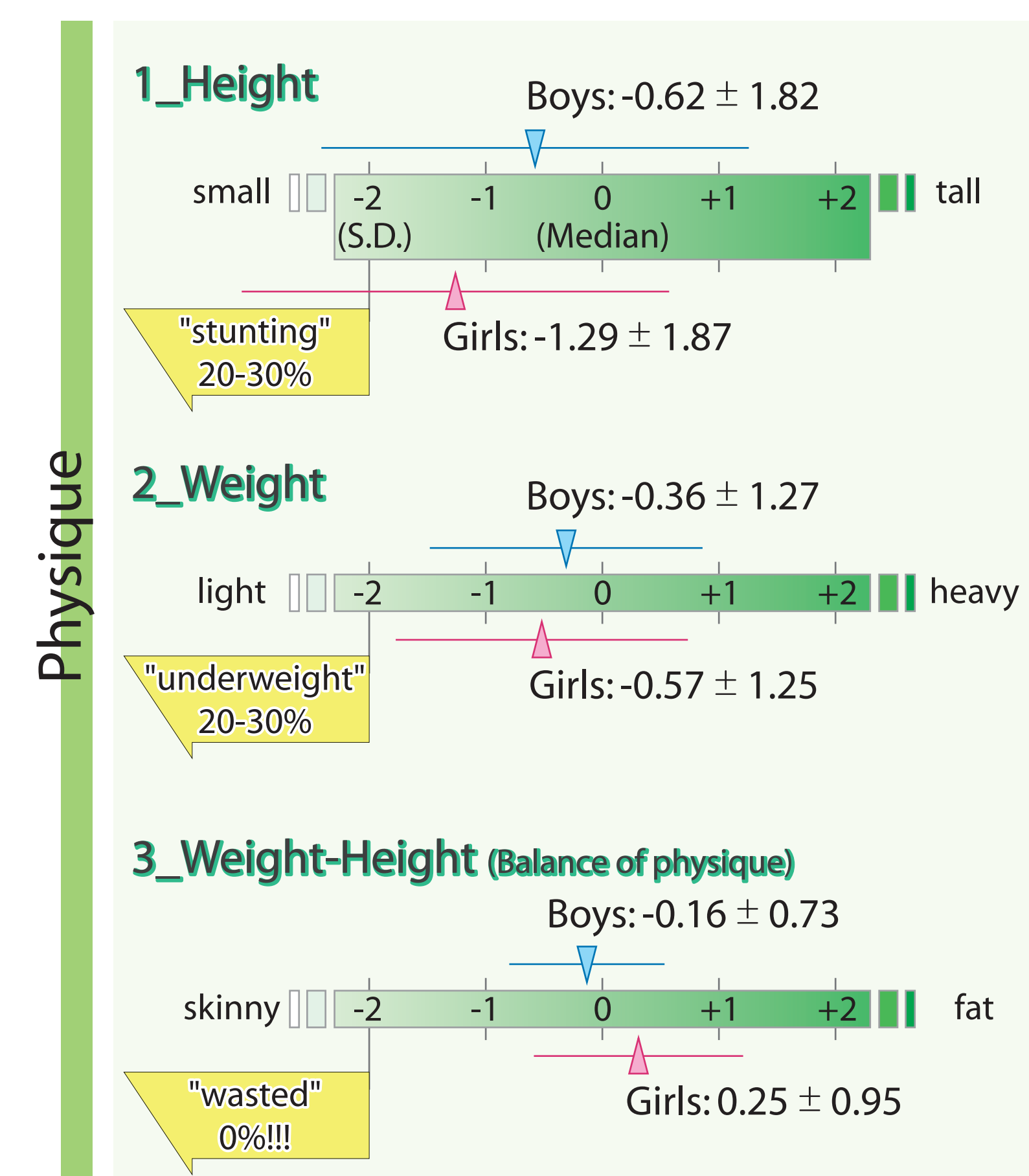
It is said that living in the tropical rainforest is difficult

- spatially dispersed
- seasonally variable
- shortage of nutritions in sub-Saharan Africa

First of all, we have to know their lifestyle is a possible model to live.

---if it's not a good model to live, it's difficult to learn the way of lives from them.

Results & Discussion



Footnotes

- *NCHS :National Center of Health Statistics
- **IOTF :International Obesity Task Force

Conclusion

According to estimated physique and body composition, childrens' nutritional status were generally good. This means their lifestyle is a possible model to live!!

Now, we can study Baka on firm foundation, and will find out what utilize to "sustainable society".

Next research

<Going on>

Analyse growth speed and pattern with large samples. (1200 Samples; 0-55 years old)

<Future>

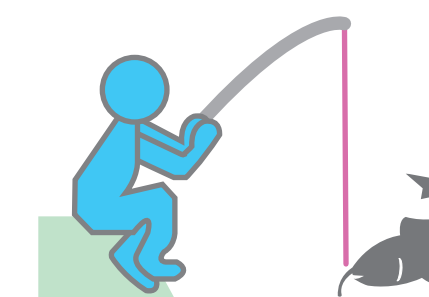
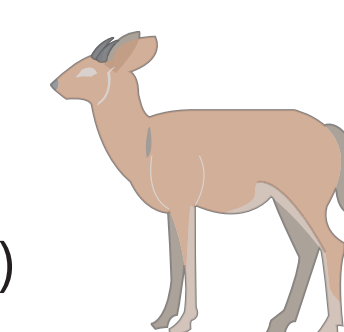
Variation of daily food intake in different districts. Relation their growth to daily food intake.

Acknowledgment

Taro YAMAUCHI Ph.D
- Hokkaido University (Supervisor.)

Some photos(***) by Koji HAYASHI Ph.D
- Kobe Gakuin University.

Member of smilelab
all Baka pygmies...



in Baka village ***