

2025 GUIDEBOOK

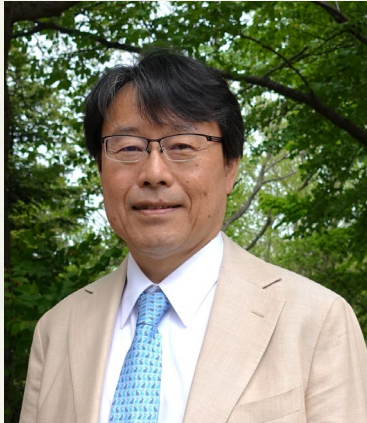


**Hokkaido
University**



Faculty of Health Sciences
Graduate School of Health Sciences
Department of Health Sciences, School of Medicine

Message from the Dean of the Faculty of Health Sciences



Professor **Akihiro** ISHIZU

Dean of the Faculty of Health Sciences

The history of Hokkaido University dates back to the foundation of Sapporo Agricultural College in 1876. Its School of Medicine was established in 1919, the year following the college's upgrade to Hokkaido Imperial University in 1918. Then the technical schools affiliated with the School of Medicine started producing healthcare professionals. The lead-off was the education of nurses in September 1920 commenced a year after the School of Medicine was established. Other programs were also created to teach students to become midwives in October 1921, clinical radiologists in April 1956 and clinical laboratory technologists in April 1966. Subsequently, the education of nurses was redesigned and started at the College of Medical Technology, Hokkaido University in October 1980. The College launched new programs to produce physical therapists and occupational therapists in April 1981 and progressively took over the education for clinical laboratory technologists and clinical radiologists. The history continued in 2003 when the Department of Health Sciences was created in the School of Medicine. It was followed by an institutional reform from 2004 to date to provide a four-year education in five specialized majors such as nursing, radiological technology, medical technology, physical therapy and occupational therapy. The inauguration of the Graduate School of Health Sciences in April 2008 celebrated the launch of new master's degree programs, followed by that of doctoral degree programs in 2010. At the Graduate School of Health Sciences, in addition to the specialized fields and the courses taught corresponding to the health professions which students hope to pursue, we offer those in health sciences aiming to open doors to people with backgrounds in veterinary medicine, pharmacology, science and engineering, agriculture and human sciences to seek new developments as an educational institute.

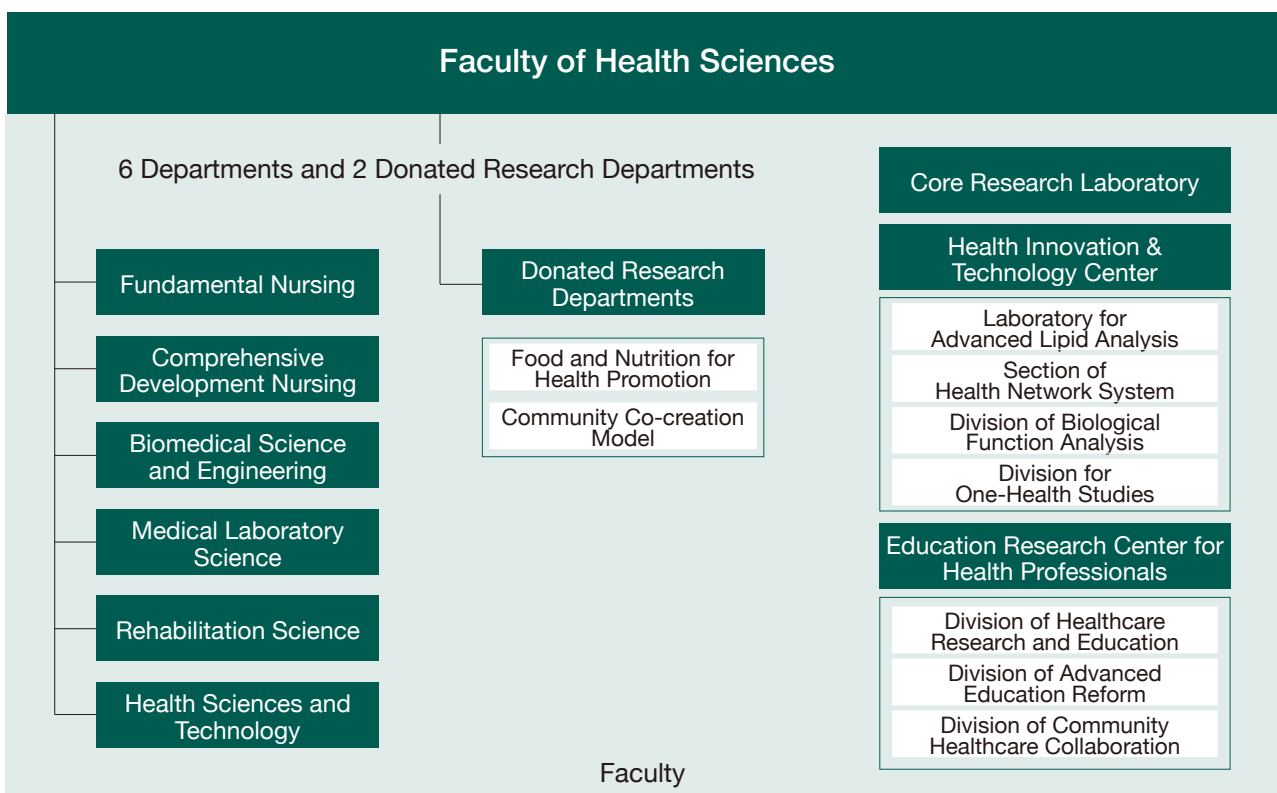
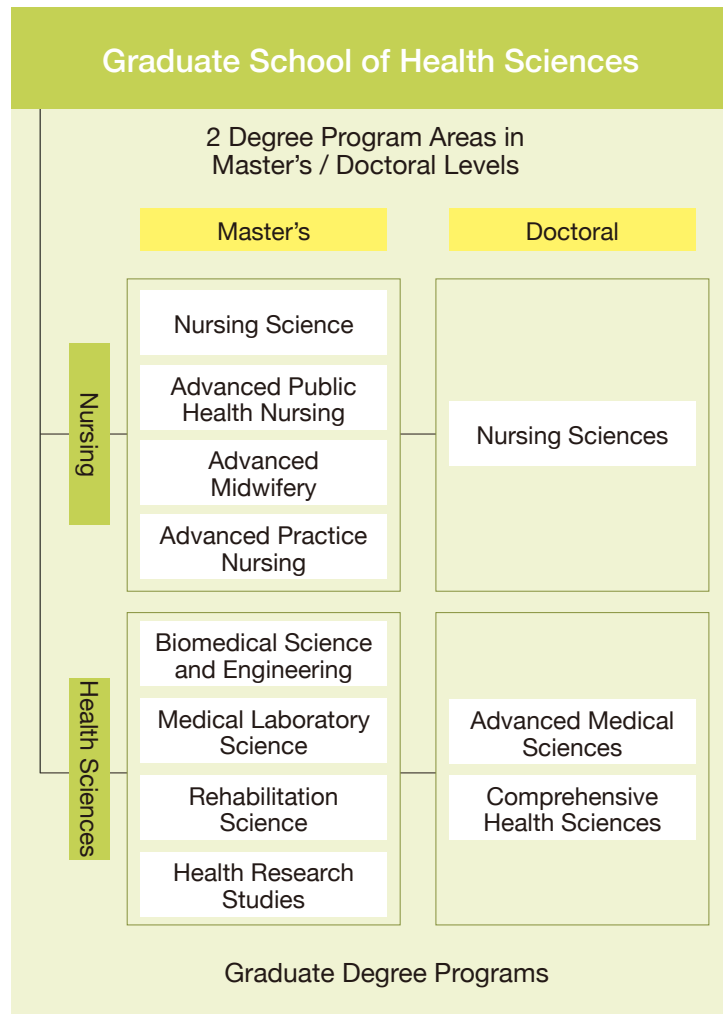
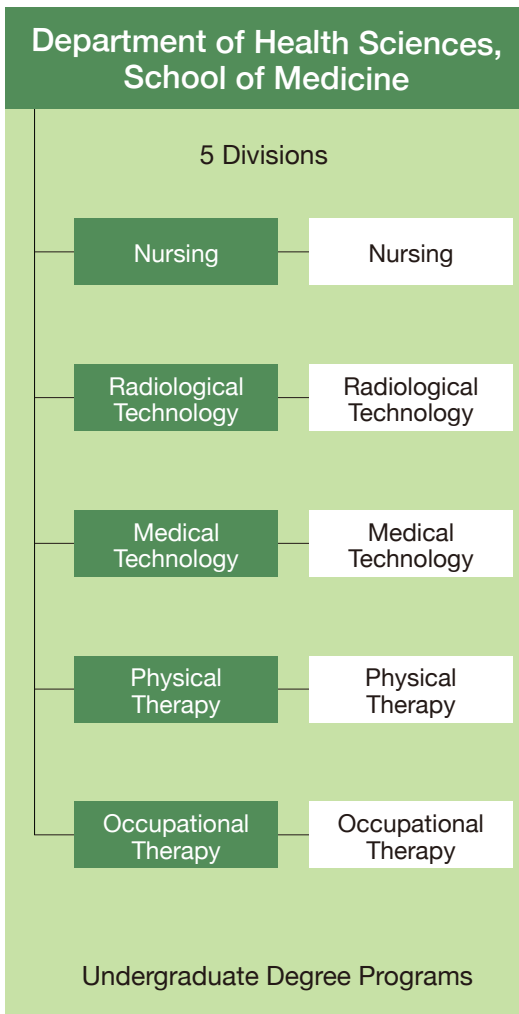
At our institute, over 70 faculty members are engaged in health science research in six departments including Fundamental Nursing, Comprehensive Development Nursing, Biomedical Science and Engineering, Medical Laboratory Science, Rehabilitation Science, and Health Sciences and Technology together with two endowed chairs. Health sciences encompass a broad research area which includes medical topics such as "What it means to be healthy", "What we need to do to maintain health" and "What we should do when health is compromised". The faculty members of our institute include not only researchers with healthcare professional qualifications such as medical doctors, nurses, clinical radiologists, clinical laboratory technologists, physical therapists and occupational therapists but also researchers from diverse backgrounds including veterinary medicine, pharmacology, science and engineering and education.

We in our civilization are now faced with many challenges ranging from global climate change, inconceivable disasters, pandemics of emerging infectious diseases as an existential threat to humanity, conflicts and declining birth rates in aging societies. What matters most is the health and well-being of people even in such circumstances, and I believe that the mission of our research institute is to find out what we can do to maintain people's health. Although we face stacks of challenges ahead, our faculty and staff are committed to playing a strong team to address every challenge with all of our wisdom and power while leveraging the strength of diversity within our team.

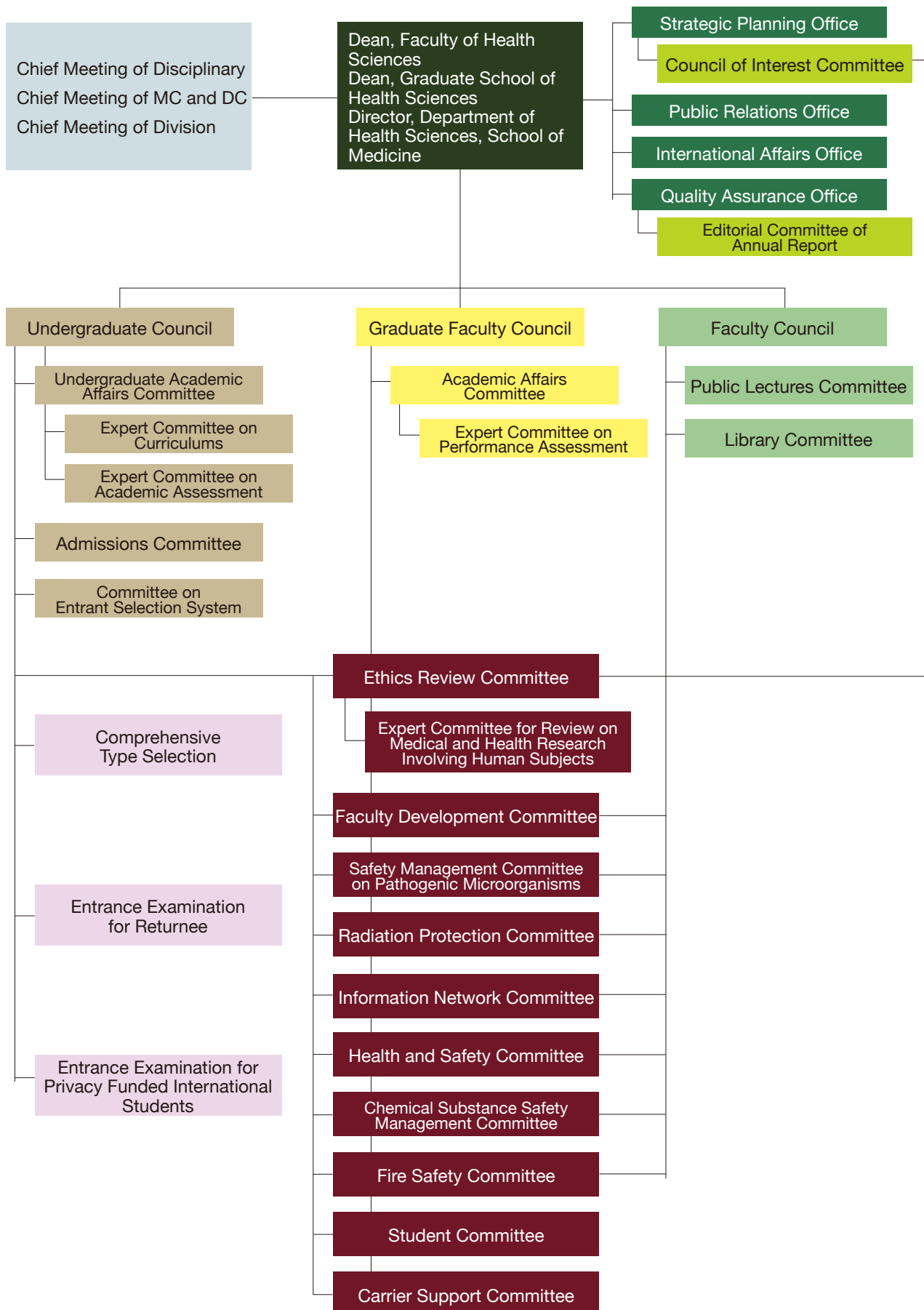
History

1920	The Medical Clinic attached to the School of Medicine in Hokkaido Imperial College adds the Nursing Course.
1945	The Nursing Course renamed the Women's College of Health and Welfare.
1951	The Women's College of Health and Welfare renamed the School of Nursing attached to the School of Medicine in Hokkaido University (abolished in 1983).
1956	The School of Medicine adds the Medical X-Ray Technicians' School (later the Technical School of Clinical Radiology, abolished in 1986).
1966	The School of Medicine adds the Sanitary Inspection Technicians' School (later the Technical School of Clinical Laboratory Science, abolished in 1984).
1980	The College of Medical Technology established (abolished in 2007).
October 1, 2003	The Department of Health Sciences established in the School of Medicine.
April 1, 2008	The Faculty of Health Sciences and the Graduate School of Health Sciences established. Master's degree programs established in the Division of Health Sciences of the Graduate School.
August 1, 2008	A Double Degree Program established in partnership with the MBA program offered by Otaru University of Commerce.
January 1, 2010	The Donated Research Department of Food and Nutrition for Health Promotion established.
March 31, 2010	The Division of Health Sciences celebrates its first master's alumni.
April 1, 2010	Doctoral degree programs established in the Division of Health Sciences.
October 1, 2011	Health Innovation and Technology Center (HITEC) established in the Faculty of Health Sciences.
April 1, 2012	Education Research Center for Health Professionals established in the Faculty of Health Sciences.
March 31, 2013	The Division of Health Sciences celebrates its first doctoral alumni.
July 5, 2013	Inaugural FHS International Conference (FHS2013) held in Sapporo, Japan (held biennially thereafter).
March 28, 2014	The Research Building E's construction completed and the existing Building A, B, C and D renovated in the Faculty of Health Sciences.
September 1, 2016	The Donated Research Department of Biological Response and Regulation established (transferred in January 1, 2024).
July 1, 2019	The Donated Research Department of Emergent Neurocognition established (terminated in June 30, 2023).
April 1, 2020	The existing Department of Rehabilitation Science and the Department of Functioning and Disability integrated into the reformed Rehabilitation Science Department of the Faculty of Health Sciences.
April 1, 2020	The Donated Research Department of Data Health Innovation established (terminated in December 31, 2023).
April 1, 2022	The Committee of International Affairs renamed the International Affairs Office.
April 1, 2025	The Donated Research Department of Community Co-creation Model established.

Schools and Faculty



Committees



Board of Executives

Dean/Director	ISHIZU Akihiro	Advisor to the Dean	YAMAUCHI Taro
Vice-Dean	YANO Rika	Advisor to the Dean	CHIKENJI Takako
Vice-Dean	EBINA Yasuhiko	Advisor to the Dean	KAMISHIMA Tamotsu

Directors of the Department of Health Sciences, School of Medicine

MATSUNO Kazuhiko	October 1, 2003 ~ March 31, 2007	DATE Hiroyuki	April 1, 2020 ~ August 6, 2022
KOBAYASHI Seiichi	April 1, 2007 ~ March 31, 2012	YANO Rika	April 1, 2023 ~ March 31, 2025
DATE Hiroyuki	April 1, 2012 ~ March 31, 2016	ISHIZU Akihiro	April 1, 2025 ~
SAITO Takeshi	April 1, 2016 ~ March 31, 2020		

Deans of the Graduate School of Health Sciences

KOBAYASHI Seiichi	April 1, 2008 ~ March 31, 2012	DATE Hiroyuki	April 1, 2020 ~ August 6, 2022
DATE Hiroyuki	April 1, 2012 ~ March 31, 2016	YANO Rika	April 1, 2023 ~ March 31, 2025
SAITO Takeshi	April 1, 2016 ~ March 31, 2020	ISHIZU Akihiro	April 1, 2025 ~

Deans of the Faculty of Health Sciences

KOBAYASHI Seiichi	April 1, 2008 ~ March 31, 2012	DATE Hiroyuki	April 1, 2020 ~ August 6, 2022
DATE Hiroyuki	April 1, 2012 ~ March 31, 2016	YANO Rika	April 1, 2023 ~ March 31, 2025
SAITO Takeshi	April 1, 2016 ~ March 31, 2020	ISHIZU Akihiro	April 1, 2025 ~

Emeritus Professors

SHIMOZUMA Mitsuo	April 1, 2006	CHIBA Hitoshi	April 1, 2018
UENO Takeji	April 1, 2007	SAEKI Kazuko	April 1, 2018
MURAMATSU Tsukasa	April 1, 2007	YAMANAKA Masanori	April 1, 2018
NAKAMURA Nishio	April 1, 2007	DENDA Kenzo	April 1, 2018
DAIGUJI Makoto	April 1, 2008	INOUE Kaoru	April 1, 2019
MORISHITA Setsuko	April 1, 2009	MURATA Waka	April 1, 2019
MATSUNO Kazuhiko	April 1, 2011	SAGAWA Tadashi	April 1, 2020
SHIMIZU Tadashi	April 1, 2011	SAITO Takeshi	April 1, 2021
MATSUSHITA Michiaki	April 1, 2012	SATO Yoko	April 1, 2022
TAKEDA Naoki	April 1, 2013	YAMAMOTO Toru	April 1, 2022
FUKUSHIMA Junko	April 1, 2013	ASAKA Tadayoshi	April 1, 2022
SAKAI Masaharu	April 1, 2013	SAKAI Shinya	April 1, 2024
MIYAMOTO Kenji	April 1, 2014	OZAKI Michitaka	April 1, 2024
MORIYAMA Takanori	April 1, 2015	YUKI Michiko	April 1, 2025
KOBAYASHI Seiichi	April 1, 2015	KATOH Chietsugu	April 1, 2025
HATTA Tatsuo	April 1, 2016		

Number of Staff

As of April 1, 2025

Professors	Associate Professors	Lecturers	Assistant Professors	Specially Appointed Academic Staff	Subtotal	Administrative Staff	Total
19	16	10	24	7	76	14	90

Number of Clinical Training Faculty

As of April 1, 2025

Professors	Associate Professors	Lecturers	Total
9	9	53	71

Departmental Exchange Agreements

Partner Institutions/Organizations	Dates	Agreement Outlines
Graduate School of Commerce, Otaru University of Commerce	August 1, 2008	Agreement on a special MBA course based on cooperation between both graduate schools
National Institute of Radiological Sciences	December 1, 2012	Agreement for graduate school cooperation
Faculty of Medicine Diponegoro University Dr. Kariadi Hospital	December 4, 2012	Agreement for international academic exchanges
College of Medicine, College of Nursing, College of Public Health and Nutrition, College of Medical Science and Technology, Taipei Medical University	December 21, 2012	Agreement for international academic exchanges
Faculty of Medicine, Chulalongkorn University	June 3, 2015	Agreement for international academic exchanges
College of Health Sciences, Kaohsiung Medical University	June 10, 2015	Agreement for international academic exchanges
Taipei Medical University	August 28, 2015	Agreement for international academic exchanges
The College of Agricultural and Environmental Sciences, the University of California, DAVIS	June 19, 2016	Working Agreement for Faculty and Student Mobility
Research Institute for Humanity and Nature	August 1, 2016	Basic Agreement on Academic Exchange and Collaboration
City of Sapporo	December 15, 2016	Agreement on Dispatch of Students and Other Volunteers to Welfare Evacuation Sites
City of Iwamizawa	May 31, 2017	Agreement on Collaboration for Health Promotion
The Faculty of Allied Health Sciences, Chulalongkorn University	August 9, 2018	Agreement for international academic exchanges
Kita Ward Office, City of Sapporo	November 20, 2018	Partnership Agreement on Collaboration for Healthy Community
University of Hong Kong School of Nursing	January 24, 2019	Agreement for international academic exchanges (expired in March 31, 2024)
City of Muroran	February 7, 2019	Agreement on Collaboration for Health Promotion
National Institute of Technology, Hakodate College	October 1, 2019	The agreement for the development of the cooperative educational program
Kiyota Ward Office, City of Sapporo	March 10, 2020	Agreement on Collaboration for Care Prevention and Health Support
Urban Renaissance Agency	July 8, 2021	Agreement on Collaboration for Healthy Community
School of Health Sciences, Faculty of Medicine, Dentistry and Health Sciences, University of Melbourne	September 4, 2023	Agreement for international academic exchanges

Number of Students

Department of Health Sciences, School of Medicine

As of May 1, 2025

Category	1st year		2nd year		3rd year		4th year		Total	
	Male	Female	Male	Female	Male	Female	Male	Female	Male	Female
Division of Nursing	-	-	7	60	9	61	4	70	20	191
	-		67 (70)		70 (70)		74 (70)		211 (210)	
Division of Radiological Technology	-	-	25	16	23	14	19	15	67	45
	-		41 (37)		37 (37)		34 (37)		112 (111)	
Division of Medical Technology	-	-	15	26	9	25	14	26	38	77
	-		41 (37)		34 (37)		40 (37)		115 (111)	
Division of Physical Therapy	-	-	15	6	13	7	9	8	37	21
	-		21 (18)		20 (18)		17 (18)		58 (54)	
Division of Occupational Therapy	-	-	12	12	8	9	5	7	25	28
	-		24 (18)		17 (18)		12 (18)		53 (54)	
Total	-	-	74	120	62	116	51	126	187	362
	-		194 (180)		178 (180)		177 (180)		549 (540)	

* Figures in parentheses indicate the prescribed number of students per year.

* With the introduction of a new general admissions exam system, Health Sciences freshmen belong to the First Year Education Division.

Graduate School of Health Sciences

As of May 1, 2025

Category	1st year		2nd year		Total	
	Male	Female	Male	Female	Male	Female
Master's Degree Program in Health Sciences						
Biomedical Science and Engineering	1	1	4	3	5	4
	2		7		9	
Medical Laboratory Science	0	16	8	6	8	22
	16		14		30	
Rehabilitation Science	5	6	6	10	11	16
	11		16		27	
Health Research Studies	3	2	3	1	6	3
	5		4		9	
Master's Degree Program in Nursing						
Nursing Science	0	2	1	3	1	5
	2		4		6	
Advanced Public Health Nursing	0	4	1	2	1	6
	4		3		7	
Advanced Midwifery	0	2	0	3	0	5
	2		3		5	
Advanced Practice Nursing	0	0	0	0	0	0
	0		0		0	
Total	9	33	23	28	32	61
	42 (40)		51 (40)		93 (80)	

* Figures in parentheses indicate the prescribed number of students per year.

Category	1st year		2nd year		3rd year		Total	
	Male	Female	Male	Female	Male	Female	Male	Female
Doctoral Degree Program in Health Sciences								
Advanced Medical Sciences	2	3	2	0	2	2	6	5
	5		2		4		11	
Comprehensive Health Sciences	2	2	3	6	10	4	15	12
	4		9		14		27	
Doctoral Degree Program in Nursing								
Nursing Sciences	0	0	0	1	2	4	2	5
	0		1		6		7	
Total	4	5	5	7	14	10	23	22
	9 (10)		12 (10)		24 (10)		45 (30)	

* Figures in parentheses indicate the prescribed number of students per year.

Research Student

As of May 1, 2025

Category	Male	Female
Research Student	8	4
Total	12	

Overseas Students

As of May 1, 2025

Category	Gov. Supported (JP)		Gov. Supported (Overseas)		Self-Supported		Total	
	Male	Female	Male	Female	Male	Female	Male	Female
Undergraduate	0	0	0	0	1	1	1	1
Postgraduate	0	2	0	0	6	5	6	7
Research Student	1	0	0	0	5	2	6	2
Total	3		0		20		23	

Enrollement by Region

Department of Health Sciences, School of Medicine

As of May 1, 2025

Category		Male	Female	Total
Hokkaido		49	82	131
Tohoku	Aomori	1	2	3
	Yamagata	0	2	2
	Fukushima	0	1	1
Kanto	Ibaraki	1	0	1
	Tochigi	0	1	1
	Gunma	0	3	3
	Saitama	0	2	2
	Chiba	2	1	3
	Kanagawa	0	4	4
	Tokyo	1	2	3
Hokuriku	Niigata	3	3	6
	Toyama	1	0	1
	Ishikawa	1	0	1
	Fukui	0	1	1
Chubu	Shizuoka	1	0	1
	Aichi	2	3	5
Kinki	Kyoto	0	2	2
	Osaka	3	1	4
	Hyogo	0	1	1
	Wakayama	0	1	1
Chugoku	Hiroshima	1	0	1
	Yamaguchi	0	1	1
Kyushu	Kumamoto	0	1	1
	Oita	0	1	1
	Miyazaki	0	1	1
Others		1	0	1
Total		67	116	183

Graduate School of Health Sciences

As of May 1, 2025

Category		Male	Female	Total
Hokkaido		8	27	35
Tohoku	Aomori	0	1	1
	Miyagi	0	1	1
Kanto	Ibaraki	0	1	1
	Gunma	0	1	1
	Kanagawa	1	1	2
Chubu	Yamanashi	1	0	1
Kinki	Osaka	1	2	3
	Hyogo	0	2	2
Others		2	2	4
Total		13	38	51

Employment by Region

Department of Health Sciences, School of Medicine

As of May 1, 2025

Category		Male	Female	Total
Hokkaido	Sapporo	10	41	51
	Other areas	4	5	9
Tohoku	Aomori	0	2	2
	Miyagi	0	1	1
Kanto	Saitama	0	1	1
	Chiba	1	3	4
	Kanagawa	0	4	4
	Tokyo	3	14	17
Chubu	Shizuoka	0	1	1
	Aichi	0	1	1
Kinki	Kyoto	0	1	1
	Osaka	0	1	1
Chugoku	Okayama	0	1	1
Shikoku	Ehime	0	1	1
Total		18	77	95

Graduate School of Health Sciences

As of May 1, 2025

Category		Male	Female	Total
Hokkaido	Sapporo	8	8	16
	Other areas	3	3	6
Kanto	Tochigi	1	0	1
	Gunma	0	1	1
	Chiba	0	1	1
	Kanagawa	0	1	1
Kinki	Tokyo	8	11	19
	Kyoto	1	1	2
Kinki	Osaka	1	1	2
	Chugoku	Hiroshima	1	0
Others		2	1	3
Total		25	28	53

Total Number of Graduates

Graduate School of Health Sciences

As of March 31, 2025

Category	Master's Degree Program (Since March 2010)	Doctoral Degree Program (Since March 2013)
Health Sciences	541	93
Nursing	141	10
Total	682	103

Career Paths after Graduation

Department of Health Sciences, School of Medicine

As of March 31, 2025

Category	Number of Graduate	Number of Admissions to Graduate Schools	Career Options (2024 Graduates)							
			Number of Graduates in Employment							Other
			Research	PHN(*) Midwife Nurse	RT, MT, PT, OT (*)	Other Health Professionals	Admin	Other	Total	
Male	41	18	1	2	12	0	0	3	18	5
Female	124	44	0	39	35	0	0	3	77	3
Total	165	62	1	41	47	0	0	6	95	8

Graduate School of Health Sciences (Master's Degree Programs)

As of March 31, 2025

Category	Number of Graduate	Number of Admissions to Graduate Schools	Career Options (2024 Graduates)								
			Number of Graduates in Employment							Other	
			Research	Academic		PHN(*) Midwife Nurse	RT, MT, PT, OT (*)	Admin	Other		Total
College/ Univ.	Other										
Male	26	4	0	1	0	0	9	0	12	22	0
Female	27	5	1	0	0	11	2	2	5	21	1
Total	53	9	1	1	0	11	11	2	17	43	1

Graduate School of Health Sciences (Doctoral Degree Programs)

As of March 31, 2025

Category	Number of Graduate	Number of Graduates with PhD Requirements Completed	Career Options (2024 Graduates)							
			Number of Graduates in Employment						Other	
			Academic		PHN(*) Midwife Nurse	RT, MT, PT, OT (*)	Researcher Other	Total		
			College/Univ.	Other						
Male	4	0	1	0	0	1	1	3	1	
Female	6	2	3	0	1	1	2	7	1	
Total	10	2	4	0	1	2	3	10	2	

*PHN : Public Health Nurse
 RT : Radiological Technologist
 MT : Medical Technologist
 PT : Physical Therapist
 OT : Occupational Therapist

Awards

Faculty of Health Sciences (AY2024)

Winner	Disciplines	Dates	Award Titles
Academic Societies and Foundations			
OGASAWARA Katsuhiko	Health Sciences and Technology	April 13, 2024	Academic Award, Japanese Society of Radiological Technology
ISHIDA Tomoya	Rehabilitation Science	September 13, 2024	Academic Award, Japanese Society of Sports Physical Therapy
KOSHINO Yuta	Rehabilitation Science	September 13, 2024	Academic Award, Japanese Society of Sports Physical Therapy
Conferences			
SATO Miho	Fundamental Nursing	October 24, 2024	Medical Staff Award, The 62nd Annual Meeting of Japan Society of Clinical Oncology
OHASHI Kazuki	Health Sciences and Technology	November 26, 2024	Excellent Presentation Award, The 62nd Annual Meeting of Japan Society of Healthcare Administration

External Funds

Stats (AY2024)

Category	Number of Funds
Joint Research	23
Consigned Research	16
Grants-In-Aid	
Grants-In-Aid for Scientific Research (KAKENHI)	125 (81)
Grants for Promoting University Reform	7 (1)
Health, Labor and Welfare Sciences Research Grant	4
Others	3 (3)
Other Funded Research	8
Endowments for Research	41
Total	227 (85)

* Joint Research and Consigned Research include competitive funds.

* Figures of Grants-In-Aid in parentheses indicate the number of representatives.

Grants-In-Aid for Scientific Research (KAKENHI) (AY2024)

Category	Number of Funds
Grant-in-Aid for Scientific Research on Innovative Areas	1 (1)
Grant-in-Aid for Scientific Research (S)	1
Grant-in-Aid for Scientific Research (A)	7 (2)
Grant-in-Aid for Scientific Research (B)	24 (12)
Grant-in-Aid for Scientific Research (C)	50 (27)
Grant-in-Aid for Challenging Research (Pioneering)	1 (1)
Grant-in-Aid for Challenging Research (Exploratory)	4 (3)
Grant-in-Aid for Early-Career Scientists	18 (18)
Grant-in-Aid for Research Activity Start-up	9 (9)
Grant-in-Aid for Publication of Scientific Research Results	1 (1)
Grant-in-Aid for JSPS Fellows	4 (4)
Fund for the Promotion of Joint International Research (Fostering Joint International Research)	3 (2)
Fund for the Promotion of Joint International Research (International Collaborative Research)	2 (1)
Total	125 (81)

* Figures in parentheses indicate the number of representatives.

School Library

Library Holdings

As of April 1, 2025

Number of Book Collection			Periodicals (Number of Journal Titles)		
Japanese Publication	Overseas Publication	Total	Japanese Publication	Overseas Publication	Total
28,217	3,931	32,148	804	131	935

Stats (2024)

Visitors	26,516				
Days Open	242				
Total Number of Books and Journals Borrowed from the Library	1,638				
Interlibrary Loan Requests to Other Libraries	No. of Photocopy Orders	337	No. of Books Loaned	3	
Interlibrary Loan Requests from Other Libraries	No. of Photocopy Orders	43	No. of Books Loaned	4	

Land and Buildings

Land	11,763㎡
------	---------

Name of Building	Building Area	Total Floor Space	Number of Floors
A	976㎡	2,653㎡	3
B	450㎡	900㎡	2
C	340㎡	2,102㎡	6
D	759㎡	4,550㎡	6
E	760㎡	3,744㎡	5
Total	3,285㎡	13,949㎡	



Hokkaido University
Faculty of Health Sciences
Graduate School of Health Sciences
Department of Health Sciences, School of Medicine

North12, West5, Kita-ku, Sapporo, 060-0812
Phone +81-11-706-3315
Website <https://www.hs.hokudai.ac.jp/e/>