

# Hokkaido University

Faculty of Health Sciences

Graduate School of Health Sciences

Department of Health Sciences, School of Medicine

**GUIDEBOOK 2023**



# Message from the Dean of the Faculty of Health Sciences



**Professor Rika YANO**  
Dean of the Faculty of Health Sciences

The history of Hokkaido University dates back to the foundation of Sapporo Agricultural College in 1876 followed by the establishment of Hokkaido Imperial University in 1918 and the School of Medicine in 1919. Then the technical schools affiliated to the School of Medicine started producing healthcare professionals. The lead-off was the education of nurses in September 1920 commenced a year after the School of Medicine was established. Other programs were started to teach students to become midwives in October 1921, clinical radiologists in April 1956 and clinical laboratory technologists in April 1966. The education of physical therapists and occupational therapists subsequently began at the College of Medical Technology, Hokkaido University in April 1981. The history continued in 2003 when the Department of Health Sciences was created in the School of Medicine. It was followed by the establishment of the Graduate School of Health Sciences in April 2008 which added doctoral degree programs in 2010.

The Department of Health Sciences forms part of the School of Medicine and provides undergraduate healthcare science education. Its curriculum consists of healthcare professional education and training for the students in five divisions - nursing, radiological technology, medical technology, physical therapy and occupational therapy – to pass respective national licensure examinations. The Graduate School of Health Sciences, whereas aspires to be a modern institute seeking out new development opportunities by opening its doors to people with a background in science and engineering, pharmaceutical sciences, agricultural sciences and humanities. To add to this, we have established the degree program area and the major field of study in health science in addition to those existing and being associated with the degree programs corresponding to the said health professional occupations. The year 2023 celebrates the 20th year of the Department and the 15th year of the Graduate School. It took a long time for our Department to evolve into a 4-year undergraduate school and our Graduate School to be launched with a prehistory and tradition of training healthcare specialists which continue to date.

Modern societies face many challenges including depopulation caused by a declining birthrate and aging population, large-scale disasters, human-threatening infectious diseases and armed conflicts. Having said that, however, I positively anticipate our societies developing along with technological advances in ICT and AI even when they provoke thoughts about what challenges the future may hold and how ethics can deal with the challenges. The lessons we learned from the COVID-19 pandemic are that we now live in an age where challenges in healthcare must be addressed globally. But I believe that our foremost importance and primal value remain in human lives, health and everyday living in any circumstances at any time. We can educate, research and practice in the discipline of health sciences which covers the prediction and prevention of diseases for people in good shape or presymptomatic stages. The discipline in fact allows various perspectives and approaches of studies around the core health domain.

“The Japan Vision: Health Care 2035 Final Report” advocates a shift in eras from a “cure-centered” focus on the cure of disease and life support to a “care-centered” approach. The enhancement and maintenance of QoL have been more in need for patients with illnesses. A shift to “care-centered” communication begins by offering support, standing in care recipients’ shoes and helping them live their own lives. Commitment to further understand others is vital while demands grow in medical provision substantiated with expertise and the latest applied evidence. Moreover, whether you live a long healthy life determines whether or not happiness will come your way. It is our mission at the Faculty of Health Sciences to generate knowledge to address healthcare challenges and facilitate human resources development to provide healthcare professionals who can apply their knowledge and practical skills at various medical front lines regardless of whether within the country or abroad.

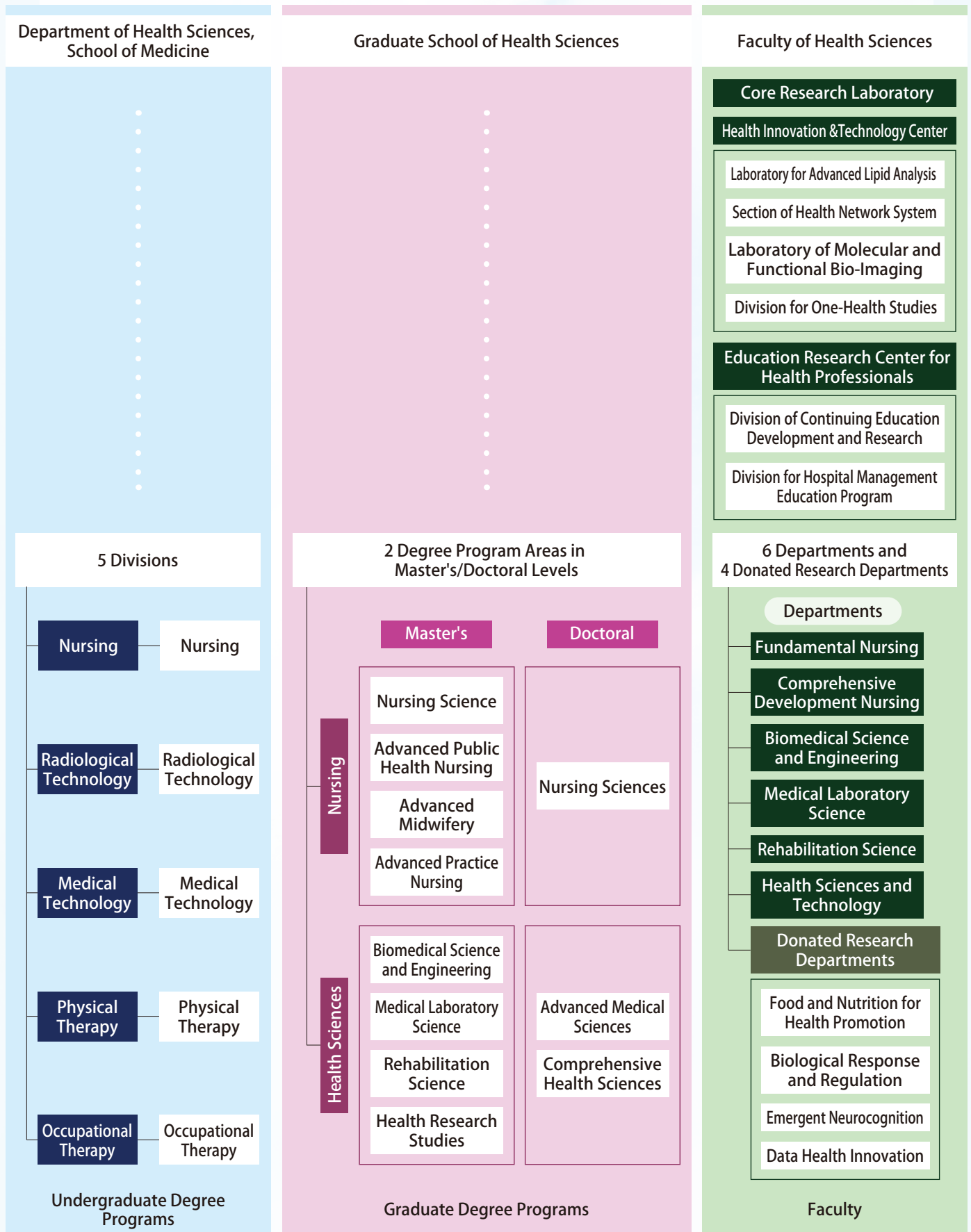
The research and education development and the outreach efforts to address community challenges are in progress at our institute which evoke Hokkaido University's basic philosophies: “Frontier Spirit”, “Global Perspective”, “All-round Education” and “Practical Learning”.

As we look ahead to what challenges may happen and keep carrying on our vision, our faculty and staff are committed to playing a strong team to act and advance toward future goals for people's health and well-being.

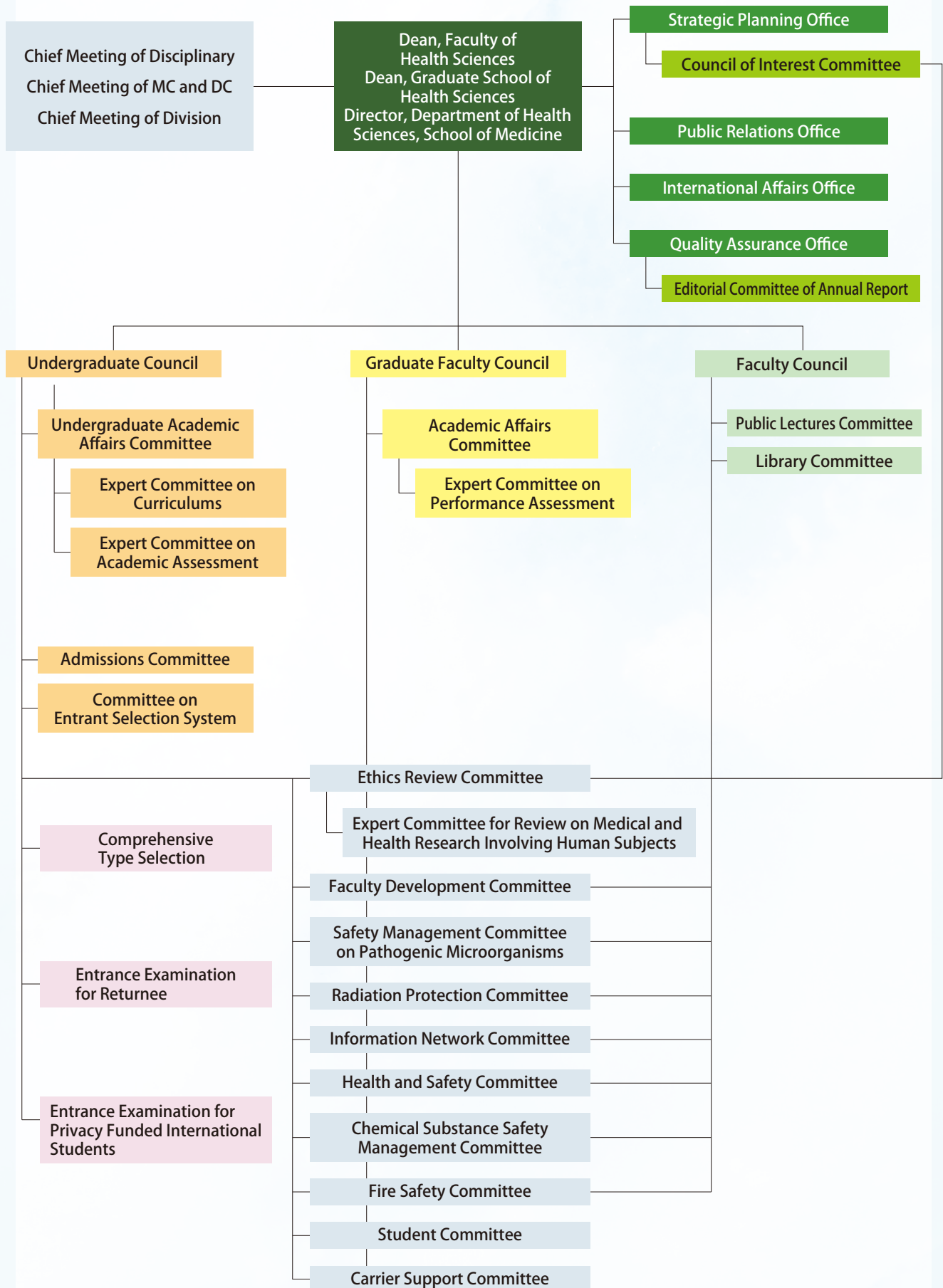
# History

1920	The Medical Clinic attached to the School of Medicine in Hokkaido Imperial College adds the Nursing Course.
1945	The Nursing Course renamed the Women's College of Health and Welfare.
1951	The Women's College of Health and Welfare renamed the School of Nursing attached to the School of Medicine in Hokkaido University (abolished in 1983).
1956	The School of Medicine adds the Medical X-Ray Technicians' School (later the Technical School of Clinical Radiology, abolished in 1986).
1966	The School of Medicine adds the Sanitary Inspection Technicians' School (later the Technical School of Clinical Laboratory Science, abolished in 1984).
1980	The College of Medical Technology established (abolished in 2007).
October 1, 2003	The Department of Health Sciences established in the School of Medicine.
April 1, 2008	The Faculty of Health Sciences and the Graduate School of Health Sciences established. Master's degree programs established in the Division of Health Sciences of the Graduate School.
August 1, 2008	A Double Degree Program established in partnership with the MBA program offered by Otaru University of Commerce.
January 1, 2010	The Donated Research Department of Food and Nutrition for Health Promotion established.
March 31, 2010	The Division of Health Sciences celebrates its first master's alumni.
April 1, 2010	Doctoral degree programs established in the Division of Health Sciences.
October 1, 2011	Health Innovation and Technology Center (HITEC) established in the Faculty of Health Sciences.
April 1, 2012	Education Research Center for Health Professionals established in the Faculty of Health Sciences.
March 31, 2013	The Division of Health Sciences celebrates its first doctoral alumni.
July 5, 2013	Inaugural FHS International Conference (FHS2013) held in Sapporo, Japan (held biennially thereafter).
March 28, 2014	The Research Building E's construction completed and the existing Building A, B, C and D renovated in the Faculty of Health Sciences.
September 1, 2016	The Donated Research Department of Biological Response and Regulation established.
July 1, 2019	The Donated Research Department of Emergent Neurocognition established.
April 1, 2020	The existing Department of Rehabilitation Science and the Department of Functioning and Disability integrated into the reformed Rehabilitation Science Department of the Faculty of Health Sciences.
April 1, 2020	The Donated Research Department of Data Health Innovation established.
April 1, 2022	The Committee of International Affairs renamed the International Affairs Office.

# Schools and Faculty



# Committees



## Board of Executives

Dean/Director	YANO Rika	Advisor to the Dean	YAMAUCHI Taro
Vice-Dean	ISHIZU Akihiro	Advisor to the Dean	YUKI Michiko
Vice-Dean	TOHYAMA Harukazu	Advisor to the Dean	KAMISHIMA Tamotsu

## Directors of the Department of Health Sciences, School of Medicine

MATSUNO Kazuhiko	October 1, 2003 ~ March 31, 2007	SAITO Takeshi	April 1, 2016 ~ March 31, 2020
KOBAYASHI Seiichi	April 1, 2007 ~ March 31, 2012	DATE Hiroyuki	April 1, 2020 ~ August 6, 2022
DATE Hiroyuki	April 1, 2012 ~ March 31, 2016	YANO Rika	April 1, 2023 ~

## Deans of the Graduate School of Health Sciences

KOBAYASHI Seiichi	April 1, 2008 ~ March 31, 2012	DATE Hiroyuki	April 1, 2020 ~ August 6, 2022
DATE Hiroyuki	April 1, 2012 ~ March 31, 2016	YANO Rika	April 1, 2023 ~
SAITO Takeshi	April 1, 2016 ~ March 31, 2020		

## Deans of the Faculty of Health Sciences

KOBAYASHI Seiichi	April 1, 2008 ~ March 31, 2012	DATE Hiroyuki	April 1, 2020 ~ August 6, 2022
DATE Hiroyuki	April 1, 2012 ~ March 31, 2016	YANO Rika	April 1, 2023 ~
SAITO Takeshi	April 1, 2016 ~ March 31, 2020		

## Emeritus Professors

SHIMOZUMA Mitsuo	April 1, 2006	MORIYAMA Takanori	April 1, 2015
UENO Takeji	April 1, 2007	KOBAYASHI Seiichi	April 1, 2015
MURAMATSU Tsukasa	April 1, 2007	HATTA Tatsuo	April 1, 2016
NAKAMURA Nishio	April 1, 2007	MIKAMI Taisei	April 1, 2017
DAIGUJI Makoto	April 1, 2008	CHIBA Hitoshi	April 1, 2018
MORISHITA Setsuko	April 1, 2009	SAEKI Kazuko	April 1, 2018
MATSUNO Kazuhiko	April 1, 2011	YAMANAKA Masanori	April 1, 2018
SHIMIZU Tadashi	April 1, 2011	DENDA Kenzo	April 1, 2018
MATSUSHITA Michiaki	April 1, 2012	INOUE Kaoru	April 1, 2019
TAKEDA Naoki	April 1, 2013	MURATA Waka	April 1, 2019
FUKUSHIMA Junko	April 1, 2013	SAGAWA Tadashi	April 1, 2020
SAKAI Masaharu	April 1, 2013	SAITO Takeshi	April 1, 2021
MIYAMOTO Kenji	April 1, 2014		

## Number of Staff

As of April 1, 2023

Professors	Associate Professors	Lecturers	Assistant Professors	Specially Appointed Academic Staff	Subtotal	Administrative Staff	Total
19	17	6	21	7	70	15	85

## Number of Clinical Training Faculty

As of April 1, 2023

Professors	Associate Professors	Lecturers	Total
9	14	58	81

## Departmental Exchange Agreements

Partner Institutions/Organizations	Dates	Agreement Outlines
Graduate School of Commerce, Otaru University of Commerce	August 1, 2008	Agreement on a special MBA course based on cooperation between both graduate schools
National Institute of Radiological Sciences	December 1, 2012	Agreement for graduate school cooperation
Faculty of Medicine Diponegoro University Dr. Kariadi Hospital	December 4, 2012	Agreement for international academic exchanges
College of Medicine, College of Nursing, College of Public Health and Nutrition, College of Medical Science and Technology, Taipei Medical University	December 21, 2012	Agreement for international academic exchanges
Faculty of Medicine, Chulalongkorn University	June 3, 2015	Agreement for international academic exchanges
College of Health Sciences, Kaohsiung Medical University	June 10, 2015	Agreement for international academic exchanges
Taipei Medical University	August 28, 2015	Agreement for international academic exchanges
The College of Agricultural and Environmental Sciences, the University of California, DAVIS	June 19, 2016	Working Agreement for Faculty and Student Mobility
Research Institute for Humanity and Nature	August 1, 2016	Basic Agreement on Academic Exchange and Collaboration
City of Sapporo	December 15, 2016	Agreement on Dispatch of Students and Other Volunteers to Welfare Evacuation Sites
City of Iwamizawa	May 31, 2017	Agreement on Collaboration for Health Promotion
The Faculty of Allied Health Sciences, Chulalongkorn University	August 9, 2018	Agreement for international academic exchanges
Kita Ward Office, City of Sapporo	November 20, 2018	Partnership Agreement on Collaboration for Healthy Community
University of Hong Kong School of Nursing	January 24, 2019	Agreement for international academic exchanges
City of Muroran	February 7, 2019	Agreement on Collaboration for Health Promotion
National Institute of Technology, Hakodate College	October 1, 2019	The agreement for the development of the cooperative educational program
Kiyota Ward office, City of Sapporo	March 10, 2020	Agreement on Collaboration for Care Prevention and Health Support
Urban Renaissance Agency	July 8, 2021	Agreement on Collaboration for Healthy Community

# Number of Students

Department of Health Sciences, School of Medicine  
As of May 1, 2023

Category	1st year		2nd year		3rd year		4th year		Total	
	Male	Female	Male	Female	Male	Female	Male	Female	Male	Female
Division of Nursing	—	—	6	70	3	61	5	64	14	195
	—		76 (70)		64 (70)		69 (70)		209 (210)	
Division of Radiological Technology	—	—	21	17	20	18	23	13	64	48
	—		38 (37)		38 (37)		36 (37)		112 (111)	
Division of Medical Technology	—	—	15	26	3	33	13	26	31	85
	—		41 (37)		36 (37)		39 (37)		116 (111)	
Division of Physical Therapy	—	—	10	9	13	6	7	11	30	26
	—		19 (18)		19 (18)		18 (18)		56 (54)	
Division of Occupational Therapy	—	—	7	8	7	10	5	14	19	32
	—		15 (18)		17 (18)		19 (18)		51 (54)	
Total	—	—	59	130	46	128	53	128	158	386
	—		189 (180)		174 (180)		181 (180)		544 (540)	

\* Figures in parentheses indicate the prescribed number of students per year.

\* With the introduction of a new general admissions exam system, Health Sciences freshmen belong to the First Year Education Division.

Graduate School of Health Sciences  
As of May 1, 2023

Category	1st year		2nd year		Total	
	Male	Female	Male	Female	Male	Female
Master's Degree Program in Health Sciences						
Biomedical Science and Engineering	3	1	6	1	9	2
	4		7		11	
Medical Laboratory Science	6	7	2	5	8	12
	13		7		20	
Rehabilitation Science	11	5	9	7	20	12
	16		16		32	
Health Research Studies	3	3	3	6	6	9
	6		9		15	
Master's Degree Program in Nursing						
Nursing Science	0	3	2	3	2	6
	3		5		8	
Advanced Public health Nursing	0	4	0	3	0	7
	4		3		7	
Advanced Midwifery	0	3	0	3	0	6
	3		3		6	
Advanced Practice Nursing	0	0	0	1	0	1
	0		1		1	
Total	23	26	22	29	45	55
	49 (40)		51 (40)		100 (80)	



Category	1st year		2nd year		3rd year		Total	
	Male	Female	Male	Female	Male	Female	Male	Female
Doctoral Degree Program in Health Sciences								
Advanced Medical Sciences	1	2	2	2	8	1	11	5
	3		4		9		16	
Comprehensive Health Sciences	4	3	2	1	13	5	19	9
	7		3		18		28	
Doctoral Degree Program in Nursing								
Nursing Sciences	0	2	0	3	3	3	3	8
	2		3		6		11	
Total	5	7	4	6	24	9	33	22
	12 (10)		10 (10)		33 (10)		55 (30)	

\* Figures in parentheses indicate the prescribed number of students per year.

#### Research Students As of May 1, 2023

Category	Male	Female
Research Student	8	7
Total	15	

#### Overseas Students As of May 1, 2023

Category	Gov. Supported (JP)		Gov. Supported (Overseas)		Self-Supported		Total	
	Male	Female	Male	Female	Male	Female	Male	Female
Undergraduate	0	0	0	0	0	1	0	1
Postgraduate	0	3	0	0	14	6	14	9
Research Student	0	0	0	0	5	5	5	5
Total	3		0		31		34	

# Enrollement by Region

Department of Health Sciences, School of Medicine  
As of May 1, 2023

Category		Male	Female	Total
Hokkaido		44	80	124
Tohoku	Aomori	2	2	4
	Iwate	0	1	1
	Miyagi	0	1	1
	Yamagata	1	1	2
	Fukushima	0	2	2
Kanto	Ibaraki	1	0	1
	Gunma	1	2	3
	Saitama	1	4	5
	Tokyo	0	1	1
	Kanagawa	1	2	3
Hokuriku	Niigata	0	1	1
	Toyama	0	1	1
	Ishikawa	2	0	2
	Fukui	1	0	1
Chubu	Nagano	0	2	2
	Shizuoka	0	3	3
	Aichi	0	1	1
	Mie	0	2	2
Kinki	Kyoto	0	1	1
	Hyogo	0	1	1
	Nara	1	0	1
	Wakayama	0	1	1
Chugoku	Shimane	0	2	2
	Okayama	0	1	1
	Hiroshima	1	0	1
Shikoku	Tokushima	0	1	1
	Ehime	1	0	1
Kyushu	Fukuoka	0	1	1
	Nagasaki	0	1	1
	Miyazaki	0	1	1
Total		57	116	173

Graduate School of Health Sciences  
As of May 1, 2023

Category		Male	Female	Total
Hokkaido		13	21	34
Tohoku	Aomori	0	1	1
Kanto	Ibaraki	0	2	2
	Gunma	1	0	1
	Saitama	0	1	1
	Tokyo	2	0	2
	Kanagawa	0	1	1
Chubu	Shizuoka	0	2	2
	Aichi	1	0	1
Kinki	Kyoto	1	0	1
	Osaka	3	0	3
Chugoku	Okayama	0	1	1
Kyushu	Fukuoka	0	1	1
Others		6	2	8
Total		27	32	59

# Employment by Region

Department of Health Sciences, School of Medicine  
As of March 31, 2023

Category		Male	Female	Total
Hokkaido	Sapporo	8	48	56
	Other	1	8	9
Tohoku	Iwate	0	1	1
Kanto	Saitama	0	2	2
	Tokyo	1	14	15
Hokuriku	Ishikawa	0	1	1
Chubu	Shizuoka	0	1	1
	Nagano	0	2	2
Kinki	Kyoto	1	0	1
	Osaka	1	2	3
	Hyogo	1	1	2
Chugoku	Tottori	1	0	1
Shikoku	Ehime	1	0	1
Total		15	80	95

Graduate School of Health Sciences  
As of March 31, 2023

Category		Male	Female	Total
Hokkaido	Sapporo	8	8	16
	Other	1	1	2
Tohoku	Aomori	0	1	1
	Miyagi	0	1	1
Kanto	Saitama	0	1	1
	Tokyo	7	7	14
Hokuriku	Niigata	0	1	1
Kinki	Kyoto	1	0	1
	Osaka	1	0	1
Others		1	2	3
Total		19	22	41

## Total Number of Graduates

Graduate School of Health Sciences  
As of March 31, 2023

Category	Master's Degree Program (Since March 2010)	Doctoral Degree Program (Since March 2013)
Health Sciences	467	71
Nursing	122	7
<b>Total</b>	<b>589</b>	<b>78</b>

## Career Paths after Graduation

Department of Health Sciences, School of Medicine  
As of March 31, 2023

Category	Number of Graduates	Career Options (2022 Graduates)								
		Number of Admissions to Graduate Schools	Number of Graduates in Employment							Other
			Research	PHN(*) Midwife Nurse	RT, MT, PT, OT (*)	Other Health Professionals	Admin	Other	Total	
Male	51	28	0	2	8	0	0	6	16	7
Female	132	40	0	42	31	2	0	8	83	9
<b>Total</b>	<b>183</b>	<b>68</b>	<b>0</b>	<b>44</b>	<b>39</b>	<b>2</b>	<b>0</b>	<b>14</b>	<b>99</b>	<b>16</b>

Graduate School of Health Sciences (Master's Degree Programs)  
As of March 31, 2023

Category	Number of Graduates	Career Options (2022 Graduates)									
		Number of Admissions to Graduate Schools	Number of Graduates in Employment							Other	
			Research	Academic		PHN(*) Midwife Nurse	RT, MT, PT, OT (*)	Admin	Other		Total
Male	26	4	0	0	0	4	1	12	17	5	
Female	25	4	2	0	0	4	5	7	18	3	
<b>Total</b>	<b>51</b>	<b>8</b>	<b>2</b>	<b>0</b>	<b>0</b>	<b>4</b>	<b>9</b>	<b>19</b>	<b>35</b>	<b>8</b>	

Graduate School of Health Sciences (Doctoral Degree Programs)  
As of March 31, 2023

Category	Number of Graduates	Number of Graduates with PhD Requirements Completed	Career Options (2022 Graduates/Other)					
			Number of Graduates in Employment					Other
			Academic		RT, MT, PT, OT (*)	Researcher Other	Total	
			College/Univ.	Other				
Male	3	2	0	0	4	0	4	1
Female	5	0	0	0	2	3	5	0
<b>Total</b>	<b>8</b>	<b>2</b>	<b>0</b>	<b>0</b>	<b>6</b>	<b>3</b>	<b>9</b>	<b>1</b>

\*PHN : Public Health Nurse  
R T : Radiological Technologist  
M T : Medical Technologist  
P T : Physical Therapist  
O T : Occupational Therapist

# Awards

## Faculty of Health Sciences (AY2022)

Winner	Disciplines	Dates	Award Titles
Academic Societies and Foundations			
FUKUNAGA Hisanori	Biomedical Science and Engineering	September 23, 2022	Encouragement Award, Nakayama Foundation for Human Science
FUKUNAGA Hisanori	Biomedical Science and Engineering	November 20, 2022	AARR Young Scientist Award, Asian Association for Radiation Research (AARR)
Conferences			
SAWAMURA Daisuke	Rehabilitation Science	June 27, 2022	Fund Award, Hokkaido-Melbourne Joint Research Workshop
Bomme Gowda Siddabasave GOWDA	Health Sciences and Technology	September 12, 2022	Travel Award, Bioactive Lipids Conference
ONISHI Ryuta	Comprehensive Development Nursing	September 13, 2022	Best Presentation Award, The 25th Annual Conference of Japan Academy of Community Health Nursing
Bomme Gowda Siddabasave GOWDA	Health Sciences and Technology	October 15, 2022	TGBM Award, The 5th Annual Conference of Society for Triglyceride Biology and Medicine
OZAKI Michitaka	Fundamental Nursing	November 4, 2022	Best Presentation Award, The 48th Annual Conference of The Japan Society for Preservation and Biology

# External Funds

## Stats (AY2022)

Category	Number of Funds
Joint Research	16
Consigned Research	13
Grants-In-Aid	
Grants-In-Aid for Scientific Research (KAKENHI)	140 (88)
Grants for Promoting University Reform	5 (5)
Health, Labor and Welfare Sciences Research Grant	2 (0)
Others	2 (2)
Other Funded Research	9
Endowments for Research	119
<b>Total</b>	<b>306</b>

- \* Joint Research and Consigned Research include competitive funds
- \* Figures of Grants-In-Aid in parentheses indicate the number of representatives.

## Grants-In-Aid for Scientific Research (KAKENHI) (AY2022)

Category	Number of Funds
Grant-in-Aid for Scientific Research on Innovative Areas	1 (0)
Grant-in-Aid for Scientific Research (S)	1 (0)
Grant-in-Aid for Scientific Research (A)	8 (2)
Grant-in-Aid for Scientific Research (B)	33 (13)
Grant-in-Aid for Scientific Research (C)	61 (42)
Grant-in-Aid for Challenging Research (Pioneering)	3 (3)
Grant-in-Aid for Challenging Research (Exploratory)	5 (2)
Grant-in-Aid for Early-Career Scientists	19 (19)
Grant-in-Aid for Encouragement of Scientists	1 (1)
Grant-in-Aid for Research Activity Start-up	3 (3)
Grant-in-Aid for Publication of Scientific Research Results	1 (1)
Grant-in-Aid for JSPS Fellows	1 (1)
Fund for the Promotion of Joint International Research	3 (2)
<b>Total</b>	<b>140 (88)</b>

- \* Figures in parentheses indicate the number of representatives.

## School Library

### Library Holdings

As of April 1, 2023

Number of Book Collection			Periodicals (Number of Journal Titles)		
Japanese Publication	Overseas Publication	Total	Japanese Publication	Overseas Publication	Total
28,262	3,992	32,254	802	131	933

### Stats (2022)

Visitors	28,418				
Days Open	241				
Total Number of Books and Journals Borrowed from the Library	2,200				
Interlibrary Loan Requests to Other Libraries	No. of Photocopy Orders	334	No. of Books Loaned	3	
Interlibrary Loan Requests from Other Libraries	No. of Photocopy Orders	178	No. of Books Loaned	4	

## Land and Buildings

Land	11,763㎡
------	---------

Name of Building	Building Area	Total Floor Space	Number of Floors
A	976㎡	2,653㎡	3
B	450㎡	900㎡	2
C	340㎡	2,102㎡	6
D	759㎡	4,550㎡	6
E	760㎡	3,744㎡	5
Total	3,285㎡	13,949㎡	

# Map of Sapporo Campus



**[Access guide]**

**By JR line:**  
Get off at Sapporo Station, 7 minutes walk to the Main Gate.

**By Sapporo subway:**  
If you take Nambu line or Toho line, get off at Sapporo Station, 10 minutes walk to the Main Gate.  
If you take Nambu line, get off at Kita junji Station, 4 minutes walk to North 13 Gate or get off at Kita juhachi jo Station, 7 minutes walk to North 18 Gate.

◇ The names for graduate schools located in the same building as the faculty are omitted  
◇ ○ indicates other faculty

- University Organization**
- 1 Administration Bureau
  - 2 Office of Diversity, Equity, and Inclusion
  - 3 Hokkaido University Hospital
  - 4 Dental Clinical Division of Hokkaido University Hospital
  - 5 Admission Center
  - 6 Institute for the Advancement of Higher Education
  - 7 Institute for the Advancement of Graduate Education
- Graduate Schools, Faculties and Schools**
- 1 Graduate School of Humanities and Human Sciences
  - 2 Graduate School of Law
  - 3 Graduate School of Economics and Business
  - 4 Graduate School of Education
  - 5 Graduate School of International Media, Communication, and Tourism Studies
  - 6 Graduate School of Public Policy
  - 7 Graduate School of Medicine
  - 8 Graduate School of Biomedical Science and Engineering
  - 9 Graduate School of Dental Medicine
  - 10 Graduate School of Veterinary Medicine
  - 11 Graduate School of Infectious Diseases
  - 12 Graduate School of Health Sciences
  - 13 Graduate School of Information Science and Technology
  - 14 Graduate School of Environmental Science
  - 15 Graduate School of Science
  - 16 Graduate School of Agriculture

- 17 Graduate School of Global Food Resources
  - 18 Graduate School of Life Science
  - 19 Graduate School of Engineering
  - 20 Graduate School of Chemical Sciences and Engineering
  - 21 Faculty of Pharmaceutical Sciences
  - 22 Faculty of Advanced Life Science
- Note: The Graduate School of Fisheries Sciences is located at Hakodate Campus
- Research Institutes & Centers**
- 1 Center for Ainu & Indigenous Studies
  - 2 Hokkaido University Press
  - 3 Hokkaido University Archives
  - 4 Slavic-Eurasian Research Center
  - 5 Center for Experimental Research in Social Sciences
  - 6 Information Initiative Center North/South Bldgs.
  - 7 Archaeological Research Center
  - 8 Center for Environmental and Health Sciences
  - 9 Field Science Center for Northern Biosphere
  - 10 Research Center for Integrated Quantum Electronics
  - 11 Proton Beam Therapy Center
  - 12 Research and Education Center for Brain Science
  - 13 Institute for Genetic Medicine
  - 14 Central Institute of Isotope Science
  - 15 Frontier Research in Applied Sciences Bldg.
  - 16 Center for Language Learning
  - 17 Center for Advanced Tourism Studies

- 18 The Open University of Japan; Hokkaido Study Center
  - 19 Health Care Center
  - 20 Education and Research Center for Mathematical and Data Science
  - 21 Center for Natural Hazards Research
  - 22 Center for Human Nature, Artificial Intelligence, and Neuroscience (CHAIN)
  - 23 Center for Advanced Human Resource Education and Development, Institute for the Advancement of Graduate Education
- Research Institutes/Centers (North Campus Area)**
- 1 Creative Research Institution (CRIS)
  - 2 Institute for the Promotion of Business-Regional Collaboration (Center for Innovation and Business Promotion, Startup Creation Department)
  - 3 Hokkaido Collaboration Center
  - 4 Social and Regional Emergence Department, Institute for the Promotion of Business-Regional Collaboration
  - 5 Platform for Research on Biofunctional Molecules (PRBM)
  - 6 Frontier Research Center for Advanced Material and Life Science
  - 7 Arctic Research Center
  - 8 Institute for Catalysis
  - 9 Research Institute for Electronic Science
  - 10 Green Nanotechnology Research Center
  - 11 Research Center of Mathematics for Social Creativity
  - 12 International Institute for Zoonosis Control
  - 13 Institute of Low Temperature Science
  - 14 Veterinary Teaching Hospital
  - 15 Institute for Vaccine Research and Development (IVRED)
  - 16 Institute for Chemical Reaction Design and Discovery (WPI-ICReDD)
- Facilities**
- 1 Conference Hall
  - 2 Clark Memorial Student Center
  - 3 Career Center
  - 4 Centennial Hall
  - 5 Furukawa Hall
  - 6 Humanities and Social Sciences Classroom Building
  - 7 "Kodomo No Sono" Child Care Center
  - 8 Faculty House Trillium
  - 9 Experiment Farm
  - 10 Student Services
  - 11 Multimedia Education Building
  - 12 Gym
  - 13 Enyu Gakusha Community Hall
  - 14 Sports Training Center
  - 15 "Tomoni" Child Care Center
  - 16 Student Communication Station
  - 17 School of Medicine Centennial Hall
- Libraries**
- 1 Central Library
  - 2 North Library
- Dorms**
- 1 Hokkaido University International House Kita 8 (Kita 8 Nishi 11)
  - 2 Keiteki-Ryo Student Dormitory (Kita 18 Nishi 13)
  - 3 Hokkaido University International House Kita 23 (Kita 23 Nishi 13)
  - 4 Foreign Scholars' Accommodation (Kita 24 Nishi 12)
- Tourist Spots**
- 1 Sakushukotoni River
  - 2 Central Lawn
  - 3 Bust of Dr. William S. Clark
  - 4 Elm Grove
  - 5 Former School of Agriculture Library
  - 6 The Hokkaido University Museum
  - 7 Monument to First Artificial Snow Crystal
  - 8 Ono Pond
  - 9 Monument in Honor of Dr. Inazo Nitobe
  - 10 Flowering Tree Garden
  - 11 Poplar Avenue
  - 12 Gingko Avenue
  - 13 Heisel Poplar Avenue
  - 14 Site of Old Village
  - 15 The Second Farm (Model Barn)
  - 16 Botanic Garden
- Cafeterias/Restaurants/Stores**
- 1 Information Center "Elm Forest Shop"
  - 2 Hokkaido University (HU) Co-op
  - 3 Clark Cafeteria
  - 4 Chuo Cafeteria, HU Co-op
  - 5 Seicomart
  - 6 Restaurant Royal
  - 7 Hokubu Cafeteria, HU Co-op
  - 8 Restaurant Poplar
  - 9 Hokudai Marche Café and Labo
  - 10 7-Eleven, Hokkaido University School of Engineering store



# **Hokkaido University**

**Faculty of Health Sciences, Graduate School of Health Sciences  
Department of Health Sciences, School of Medicine**

North 12, West 5, Kita-ku, Sapporo, 060-0812, Japan

Phone +81-11-706-3315

Fax +81-11-706-4916

URL <https://www.hs.hokudai.ac.jp/>